

THORNBURY

Floorstanding Vanity Unit

Product Picture/Photo



Note: Thornbury 800 Saltillo with brass legs and XX Handles; Tap – XX; Walls - South Cliff Terra – Paint - Pompeian Red; Floor – Volterra Tortona

PRODUCT DETAILS:**THORNBURY VANITY UNIT**

- Available in 3 sizes and 4 colours
- FE Product Code: Various (dependent on size and colour)
- Each unit it customisable with your choice of handles, legs and taps
- Single ceramic basin with 1 tap hole – waste and tap to be ordered separately.
- Carcass: 16mm, 18mm and 20mm Painted & Melamine faced MDF
- Fascia Components: 20mm Painted MDF
- 10 year manufacturers guarantee

THORNBURY UNITS:

Thornbury 600
THRN600**COLOUR**



Thornbury 800
THRN800**COLOUR**



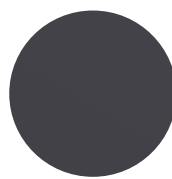
Thornbury 1000
THRN1000**COLOUR**

THORNBURY COLOURS:

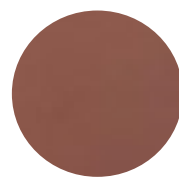
WHITE GLOSS



CANTALA



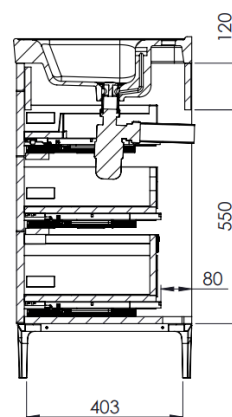
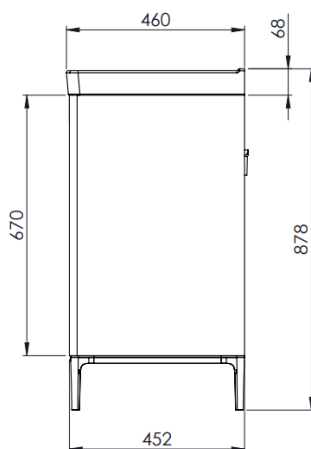
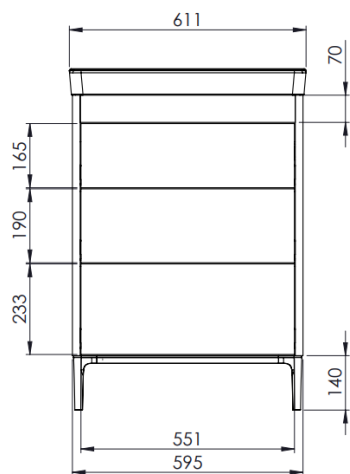
BASALT



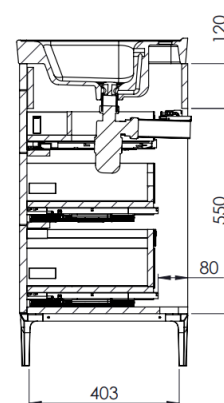
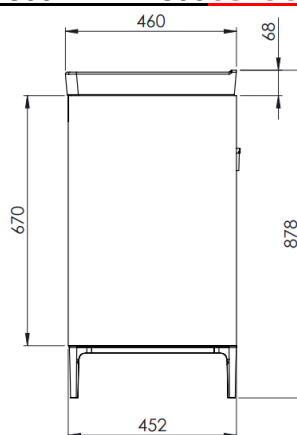
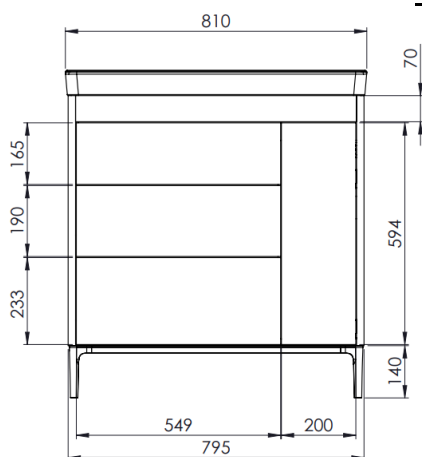
SANTILLO

STEP 1: CHOOSE YOUR UNIT SIZE:

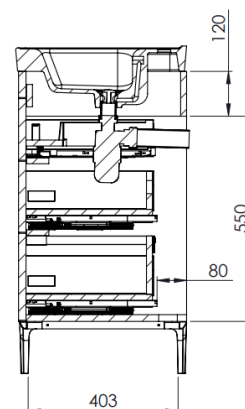
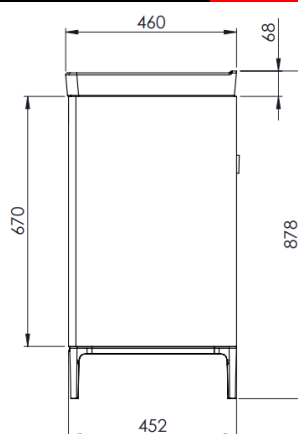
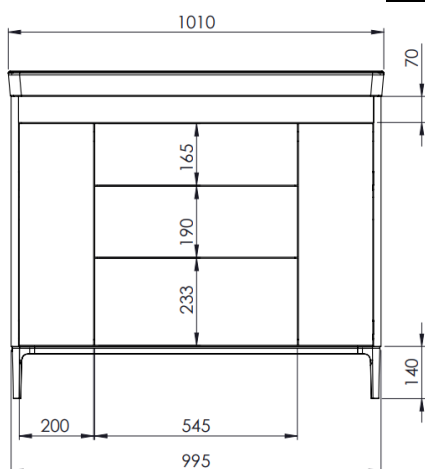
Thornbury 600 + fixings - THRN600**COLOUR**



Thornbury 800 – THRN800**COLOUR**



Thornbury 1000 – THRN1000**COLOUR**

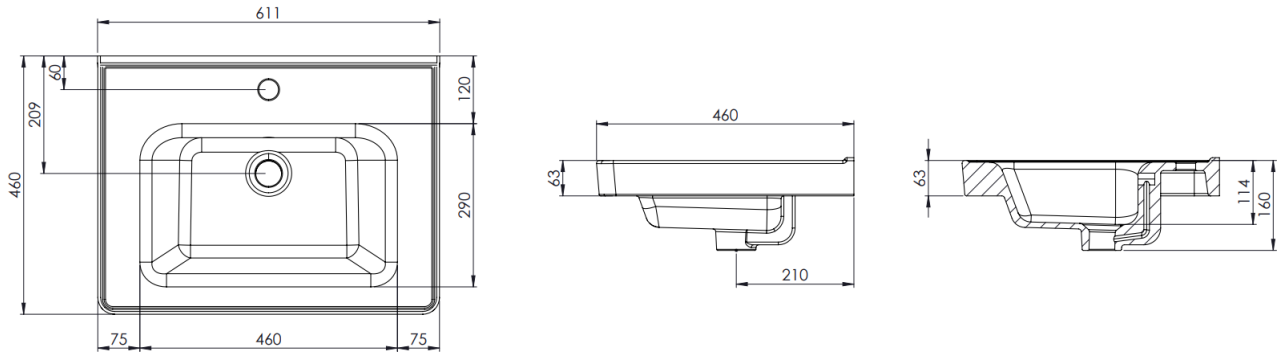


** Dimensions are subject to change, customers are advised to measure actual product before commencing installation.

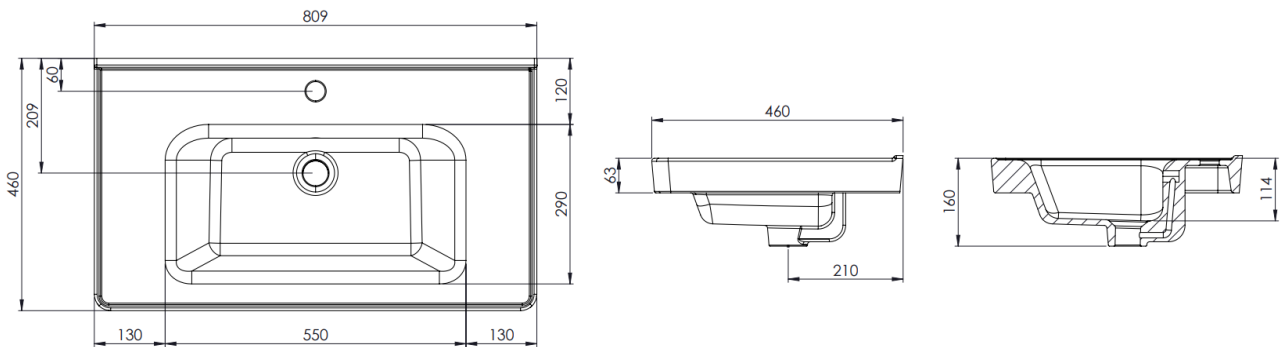
*** Fixing point dimensions are for guidance only/the positions of wall fixing must be checked when product is received.

STEP 2: ADD THE CORRECT SIZE BASIN:

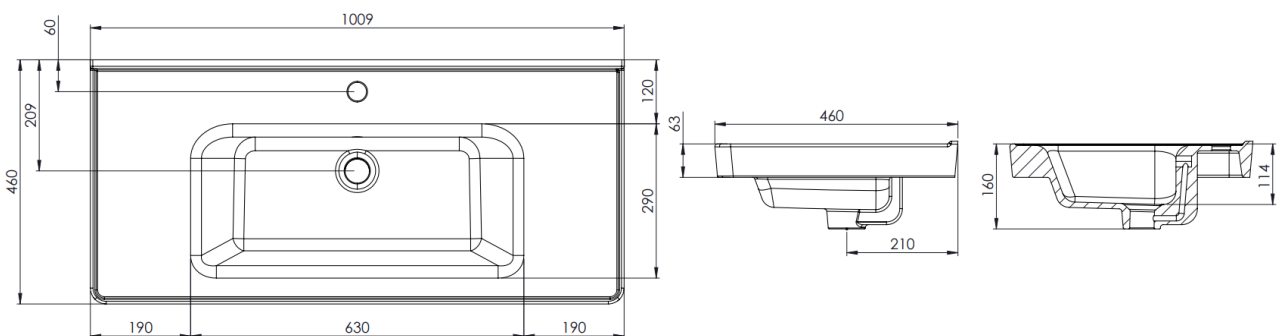
Thornbury 600 Basin - THRNBAS600



Thornbury 800 Basin – THRNBAS800



Thornbury 1000 Basin – THRNBAS1000



Diagrams not to scale
All dimensions in mm
Tolerance of +/-5mm

PRODUCT INFORMATION

BATHROOMS

FIRED EARTH —

STEP 3: CHOOSE YOUR HANDLES:

			
ORLA PULL HANDLE 160 CHROME ORLAPULLCHROME (not for slim LH/ RH drawers on 800 & 1000mm skus)	ORLA PULL HANDLE 160 BRASS ORLAPULLBRASS (not for slim LH/ RH drawers on 800 & 1000mm skus)	ORLA PULL HANDLE 160 BLACK ORLAPULLBLACK (not for slim LH/ RH drawers on 800 & 1000mm skus)	ORLA PULL HANDLE 160 BRONZE ORLAPULLBRONZE (not for slim LH/ RH drawers on 800 & 1000mm skus)
			
ORLA KNOB CHROME ORLACHROME	ORLA KNOB BRASS ORLABRASS	ORLA KNOB BLACK ORLABLACK	ORLA KNOB BRONZE ORLABRONZE
			
LUNA PULL HANDLE 128 CHROME LUNAPULLCHROME	LUNA PULL HANDLE 128 BRASS LUNAPULLBRASS	LUNA PULL HANDLE 128 BLACK LUNAPULLBLACK	REY KNOB CHROME REYCHROME
			
MAVEN KNOB CHROME MAVENCHROME	MAVEN KNOB BRASS MAVENBRASS	MAVEN KNOB BLACK MAVENBLACK	
			
NOOR TBAR KNOB CHROME NOORCHROME	NOOR TBAR KNOB BRASS NOORBRASS	NOOR TBAR KNOB BLACK NOORBLACK	

PRODUCT INFORMATION

BATHROOMS

FIRED EARTH —

		
LYRA KNOB CHROME LYRACHROME	LYRA KNOB BRASS LYRABRASS	LYRA KNOB BLACK LYRABLACK

STEP 4: ADD OPTIONAL FEET:

	600	800	1000
GREY	THORNBURY 600 FM LEGS GREY THRN600LEGSG	THORNBURY 800 FM LEGS GREY THRN800LEGSG	THORNBURY 1000 FM LEGS GREY THRN1000LEGSG
BRASS	THORNBURY 600 FM LEGS BRASS THRN600LEGSB	THORNBURY 800 FM LEGS BRASS THRN800LEGSB	THORNBURY 1000 FM LEGS BRASS THRN1000LEGSB

EXTRA DIMENSIONS:

	600	800	1000
Internal Drawer Depth – Front to Back:	324mm	324mm (Slim Drawer: 274mm)	324mm (Slim Drawer: 274mm)
Internal Drawer Height:	68mm (Top) 103mm (Middle) 156mm (Bottom)	63mm (Top) 102mm (Middle) 103mm (Bottom) Slim Drawer: 68mm (top) 201mm (bottom)	55mm (Top) 102mm (Middle) 156mm (Bottom) Slim Drawer: 60mm (top) 102mm (bottom)
Internal Drawer Width:	515mm	506mm (Slim Drawer: 152mm)	492mm (Slim Drawer: 153mm)
Drawer Cut Out (W&D):	150mm x 240mm	130mm x 220mm	150mm x 240mm

FAQs

Q. Can the unit be purchased without legs?	A. Yes, the unit can be installed wall hung without legs.
Q. How big is the plumbing void?	A. 80mm. The base panel has cut out for pipe work allowance.
Q. Are the handles fitted?	A. No, there are two handle options for which the holes need drilling. Please refer to handle template provided.
Q. Are the runners soft close?	A. The runners are both soft close and quick release.
Q. How deep is the unit when the drawers are fully open?	A. Approx: 750mm.
Q. Can the drawers be adjusted?	A. The drawer fascia's can be adjusted as detailed in the supplied instructions.
Q. Do the legs come pre-applied for furniture?	A. No - refer to instructions for installation method.
Q. Does the customer have to assemble leg components?	A. Yes, refer to instructions for installation method.
Q. What is the interior finish of the unit?	A. The unit interior finish is dark grey except for the side panels which match the exterior finish.
Q. What is the maximum water depth of the basin?	A. 71mm up to the overflow.
Q. What is the width of the Tap ledge?	A. The Tap ledge is 120mm wide.
Q. What is the distance from the Taphole centre to Basin Waste?	A. 149mm
Q. Is the rear of the basin glazed?	A. No, the rear of the basin is not glazed.
Q. What is the overflow rating of the basin?	A. CL15
Q. Can this basin be wall mounted?	A. No, this basin cannot be wall mounted.
Q. What are the taphole/basin waste sizes?	A. All sizes are to British Standard - (BS EN 31)

Diameter of the central tap hole = 35mm : +2/ -1mm
 • Bore of the waste outlet hole = 46mm : +2 / - 3mm
 • Diameter of the base for the seal between the waste outlet hole
 and the waste fitting = ≥ 60 mm

We hope you are fully satisfied with your Fired Earth products, however in the unlikely event that the product is unsuitable or that you are not fully satisfied please refer to our full terms and conditions - <https://www.firedearth.com/returns-refunds>