

## PRODUCT INFORMATION

BATHROOMS

# FIRED EARTH —

### HIGHCLERE

Floorstanding Vanity Unit

Product Picture/Photo



Note: Highclere 1200 Sea Mist (upstand created using East Hampton Marble); Tap – Bastide deck mounted three hole basin mixer with levers in chrome; Walls - Paint – Old Ochre; Floor – Infusion Nazare

**PRODUCT DETAILS:****HIGHCLERE VANITY UNIT**

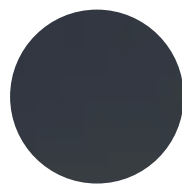
- The Highclere Vanity Unit is available in 5 colours with both single and double basin configurations, based on your choice of basin and worktops.
- A traditional underslung vanity unit with ample storage space for bathroom essentials. Fitted with soft-close doors and a choice of handles (\*\*each Highclere unit includes chrome handles as standard but you can choose to upgrade to handles of your choice)
- Choose from two solid surface worktop options - Carrara Marble Effect or Arctic White, to complete the look (upstand not included – East Hampton tiles have been used to create the upstand look)
- Traditional 5 piece doors and grooved side panels which create a classic and traditional look
- Tap holes to be drilled on site (template included in box with worktop)
- FE Product Code: Various (dependent on colour)
- Oval underslung ceramic basin – choose 1 or 2 depending on your worktop selection – waste and tap to be ordered separately.
- Carcass: 45mm Painted Pine & 15/18/27mm Painted MDF
- Fascia Components: 21mm Painted MDF & 21mm Painted Pine
- 10 year manufacturers guarantee

**HIGHCLERE COLOURS:**

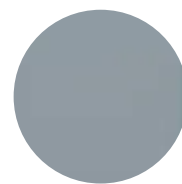
FLAX WHITE



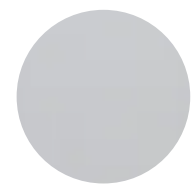
FERN



SHALE GREY



SEA MIST



CHESIL GREY

## PRODUCT INFORMATION

BATHROOMS

# FIRED EARTH —

### STEP 1: CHOOSE YOUR UNIT COLOUR:



HIGHCLERE 1200 CURVED FM FERN  
HIGH1200FERN



HIGHCLERE 1200 CURVED FM FLAX WHITE  
HIGH1200FLAX



HIGHCLERE 1200 CURVED FM SHALE GREY  
HIGH1200SHALE



HIGHCLERE 1200 CURVED FM SEA MIST  
HIGH1200SEA

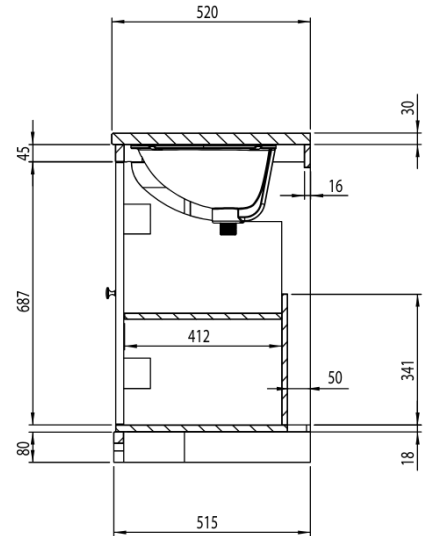
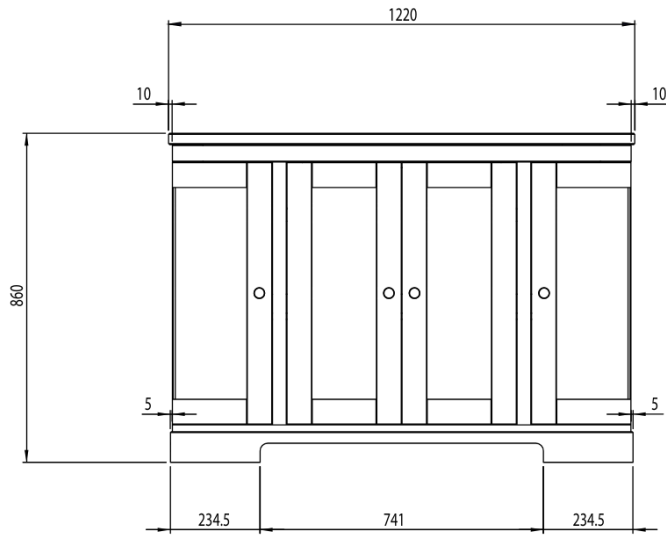


HIGHCLERE 1200 CURVED FM CHESIL GREY  
HIGH1200CHES



**\*\*handle included as standard\*\***

Highclere 1200 + handles/fixings - HIGH1200**COLOUR**



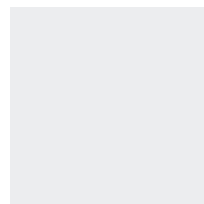
\*\* Dimensions are subject to change, customers are advised to measure actual product before commencing installation.

\*\*\* Fixing point dimensions are for guidance only/the positions of wall fixing must be checked when product is received.

**STEP 2: CHOOSE YOUR WORKTOP:**



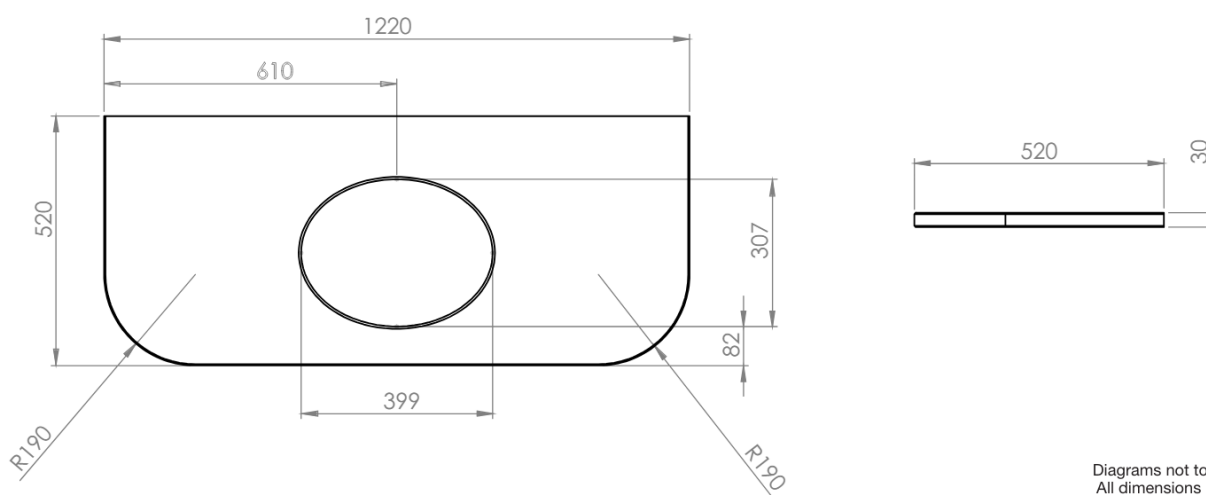
Underslung Carrara Solid Surface Worktop



Underslung White Solid Surface Worktop

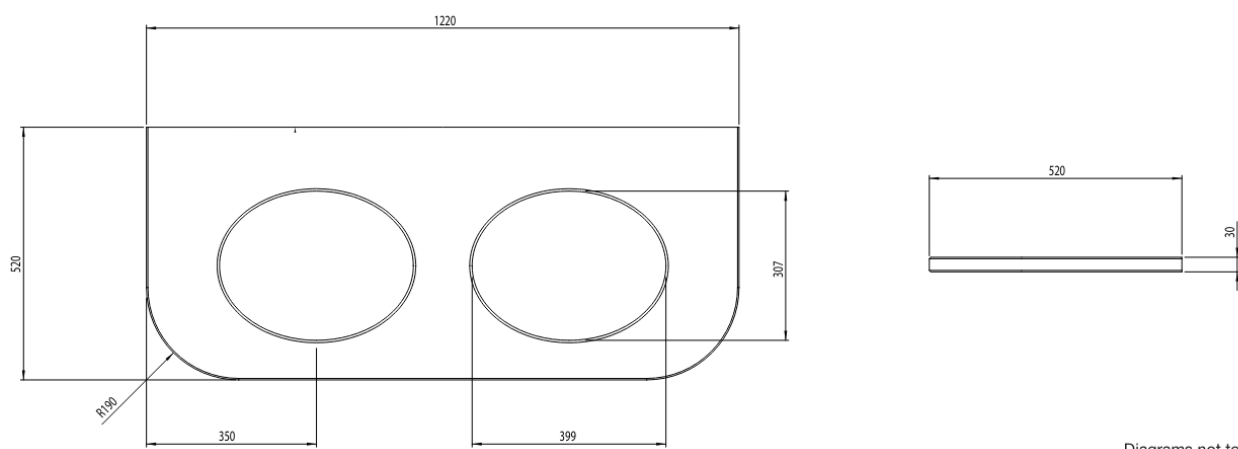
Highclere 1200 Curve Underslung Worktop Carrara 1H - HIGHTOPSINGLEC

Highclere 1200 Curve Underslung Worktop White 1H - HIGHTOPSINGLEW



Highclere 1200 Curve Underslung Worktop Carrara 2H - HIGHTOPDOUBLEC

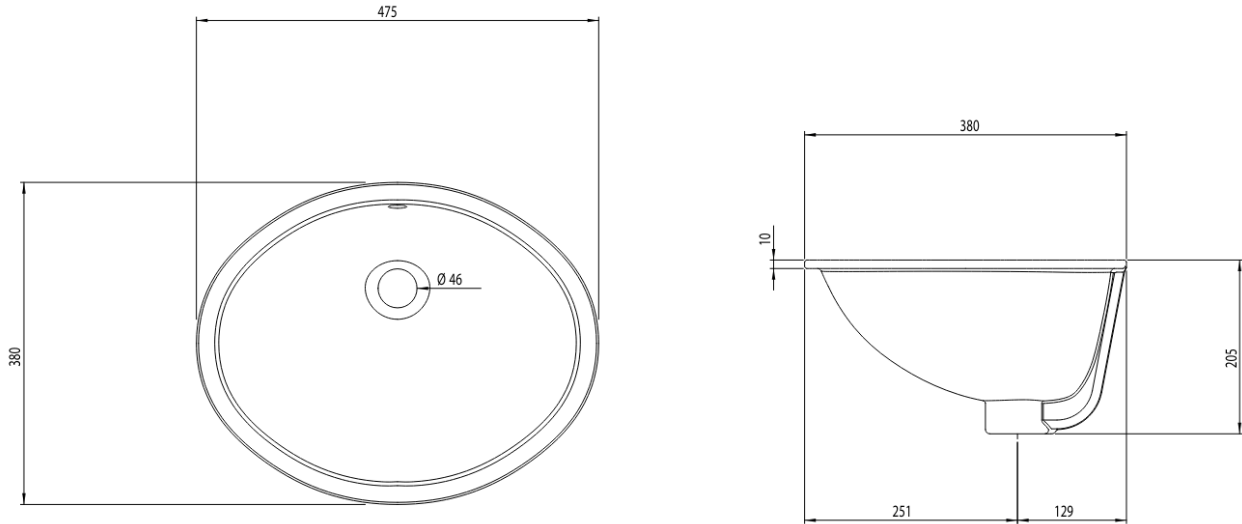
Highclere 1200 Curve Underslung Worktop White 2H - HIGHTOPDOUBLEW



**\*\*Dimensions are subject to change; customers are advised to measure actual product before commencing installation**

**STEP 3: ADD THE BASIN(S):**

HIGHCLERE CURVED UNDERSLUNG BASIN OVAL – HIGHBAS



**\*\*Dimensions are subject to change; customers are advised to measure actual product before commencing installation**

**\*\*PLEASE NOTE THAT YOU NEED TO ORDER 1 BASIN FOR THE SINGLE SINK WORKTOP OPTION & 2 BASINS FOR THE DOUBLE WORKTOP OPTION – BASINS NEED TO BE INSTALLED DURING FITTING\*\***

STEP 4: CHOOSE YOUR HANDLES:

			
ORLA KNOB CHROME ORLACHROME	ORLA KNOB BRASS ORLABRASS	ORLA KNOB BLACK ORLABLACK	ORLA KNOB BRONZE ORLABRONZE
			
MAVEN KNOB CHROME MAVENCHROME	MAVEN KNOB BRASS MAVENBRASS	MAVEN KNOB BLACK MAVENBLACK	REY KNOB CHROME REYCHROME
			
NOOR TBAR KNOB CHROME NOORCHROME	NOOR TBAR KNOB BRASS NOORBRASS	NOOR TBAR KNOB BLACK NOORBLACK	
			
LYRA KNOB CHROME LYRACHROME	LYRA KNOB BRASS LYRABRASS	LYRA KNOB BLACK LYRABLACK	

**FAQs**

Q. How big is the plumbing void?	A. 50mm.
Q. Are the handles fitted?	A. No, handles need fixing.
Q. Can I use different handles?	A. Yes, other handle hole centres can be drilled by the fitter
Q. How far apart are the hole centres for the handles?	A. N/A, all handles are knobs.
Q. Are the hinges soft close?	A. The hinges are both soft close and quick release.
Q. How deep is the unit with door open?	A. Approx. 790mm at 90°.
Q. Can the doors be adjusted?	A. The doors can be adjusted as detailed in the supplied instructions.
Q. Is the shelf removable?	A. The shelf in the centre is removable however, both shelves on the sides are permanently fixed.
Q. What is the shelf capacity?	A. Shelf max depth: 412mm.
Q. How many shelves are there?	A. There is one shelf and a base within the unit.
Q. Is the shelf adjustable?	A. No, all shelves are not adjustable.
Q. What is the interior finish of the unit?	A. The unit interior is the same finish as the exterior.
Q. How wide is the unit with curved doors open?	A. Approx 1750mm at 90°.
Q. What tools are suitable for cutting the worktop?	A. A fine-tooth saw, router, circular or jigsaw. Please refer to the instructions provided.
Q. What cleaning products are suitable for this worktop?	A. Please refer to the instructions provided.
Q. What is the maximum water depth of the basin?	A. 125mm up to the overflow.

We hope you are fully satisfied with your Fired Earth products, however in the unlikely event that the product is unsuitable or that you are not fully satisfied please refer to our full terms and conditions - <https://www.firedearth.com/returns-refunds>